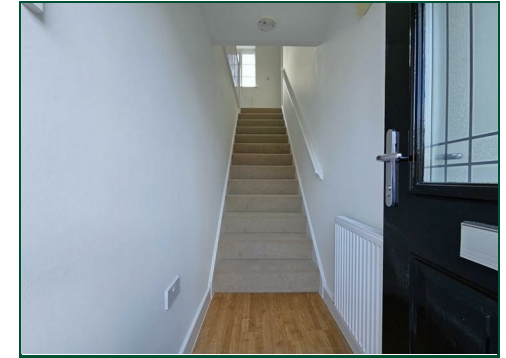




Badger Lane

Grange Park, Northampton

oriordanbond
LETTINGS



Badger Lane

Grange Park

NN4 5DH

£1,100 PCM

A well presented two bedroom coach house located in the popular area of Grange Park. The accommodation includes entrance lobby with stairs leading up to main hallway, sitting/dining room, fitted kitchen with hob and oven, two double bedrooms with built in wardrobe to the master bedroom, four piece bathroom with shower. The property further benefits from gas radiator heating, double glazing, its own entrance and allocated parking for one domestic vehicle.

Tenancy Information

- Deposit: £1269.00 (1 Week Holding Deposit - £253.00)
- Smokers: Not Allowed
- Unfurnished
- Length of Tenancy: Long Term
- Available: Mid July 2026

Additional information

- Council Tax Band: C
- Energy Efficiency Rating: C

Viewing

Viewing strictly by appointment – details below

Disclaimer

O'Riordan Bond Estate Agents Limited has not tested apparatus, equipment, fittings or services and so cannot verify they are in working order. The buyer is advised to obtain verification from their solicitor or surveyor.

O'Riordan Bond Weston Favell Lettings
01604 814400

lettingswestonfavell@oriordanbond.co.uk

